



MOMENTUM 4

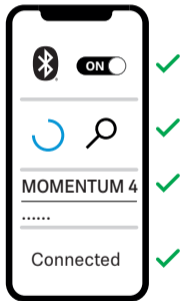
Model: M4AEBT

SENNHEISER

1.



2.






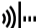






3.

 Smart Control



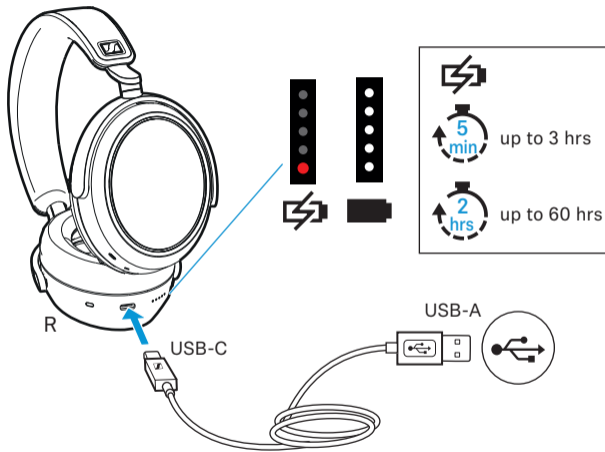
EN	Quick Guide
DE	Kurzanleitung
FR	Guide rapide
ES	Instrucciones resumidas
PT	Guia rápidos
NL	Beknopte handleiding
IT	Guida rapida
DA	Kort vejledning
SV	Snabbguide
FI	Pikaohje
EL	Σύντομες οδηγίες
PL	Krótką instrukcja obsługi
TR	Kısa Kılavuz
RU	Краткая инструкция
JA	クイックガイド
ZH-HANS	快速指南
ZH-HANT	快速指南
KO	빠른 안내서
ID	Panduan ringkas

	Charging	3
	Power on / Power off.....	4
	Pairing.....	5
	Music control	6
	Call control	7
	Adaptive Noise Cancellation.....	8
	Transparency Mode.....	9
	Voice assistant.....	10
	Package includes.....	11
	Troubleshooting.....	12



Charging

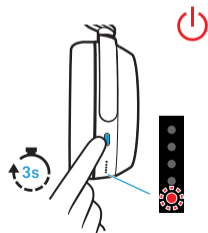
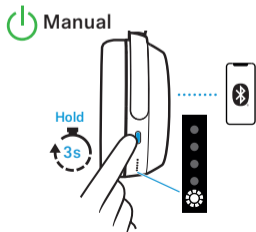
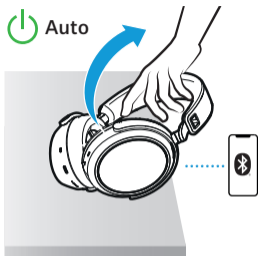
DE	Laden
FR	Charger
ES	Cargar
PT	Carregar
NL	Opladen
IT	Caricare
DA	Opladning
SV	Laddning
FI	Lataaminen
EL	Φόρτιση
PL	Ładowanie
TR	Şarj etme
RU	Зарядка
JA	充電
ZH-HANS	充电
ZH-HANT	充電
KO	충전
ID	Mengisi daya





Power on / Power off

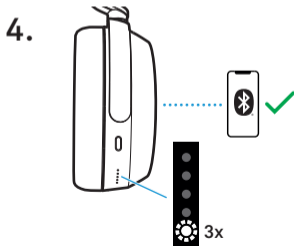
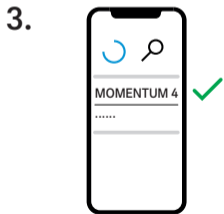
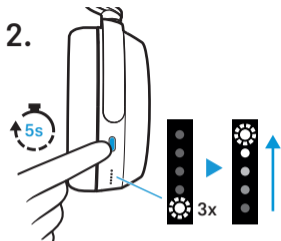
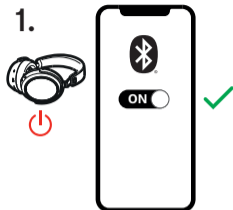
DE	Einschalten/Ausschalten
FR	Allumer / éteindre
ES	Encender / Apagar
PT	Ligar/desligar
NL	Inschakelen/uitschakelen
IT	Accendere/Spegnere
DA	Tænd/sluk
SV	Sätta på/stänga av
FI	Virran kytkeminen ja katkaiseminen
EL	Ενεργοποίηση / απενεργοποίηση
PL	Włączanie / wyłączenie
TR	Açma/Kapatma
RU	Включение/выключение
JA	スイッチのオン/オフ
ZH-HANS	接通/关闭
ZH-HANT	接通 / 關閉
KO	켜기/끄기
ID	Mengaktifkan/menonaktifkan





Pairing

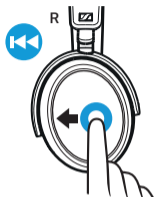
- DE Koppeln
- FR Appairer
- ES Sincronizar
- PT Emparelhar
- NL Koppelen
- IT Accoppiare
- DA Parring
- SV Parkoppla
- FI Pariliitoksen muodostaminen
- EL Ζεύξη
- PL Parowanie
- TR Eşleştirme
- RU Сопряжение
- JA 連結
- ZH-HANS 配对
- ZH-HANT 配對
- KO 페어링
- ID Menyandingkan





Music control

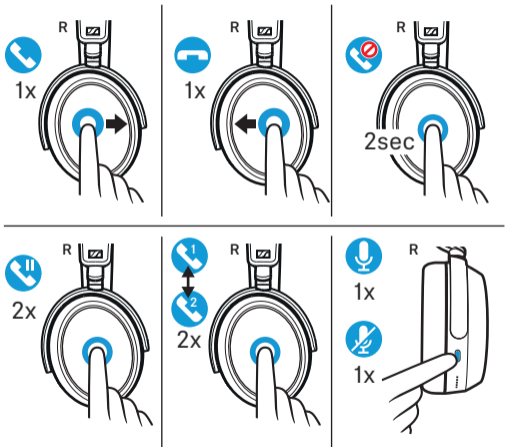
DE	Musiksteuerung
FR	Contrôle de la musique
ES	Control de música
PT	Controlo/Controle da música
NL	Muziekbediening
IT	Gestione della musica
DA	Musikstyring
SV	Musikstyrning
FI	Musiikin toiston ohjaus
EL	Χειρισμός αναπαραγωγής μουσικής
PL	Sterowanie muzyką
TR	Müzik kumandası
RU	Управление воспроизведением музыки
JA	音楽制御
ZH-HANS	音乐控制器
ZH-HANT	音樂控制器
KO	음악 제어
ID	Pengaturan musik





Call control

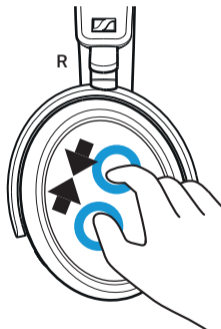
- DE Anrufsteuerung
FR Contrôle des appels
ES Control de llamadas
PT Controlo/Controle de chamadas
NL Belbesturing
IT Gestione delle chiamate
DA Opkaldsstyring
SV Samtalsstyrning
FI Puhelujen ohjaus
EL Χειρισμό κλήσεων
PL Sterowanie rozmowami telefonicznymi
TR Çağrı kontrolü
RU Управление вызовами
JA 電話制御
ZH-HANS 来电控制器
ZH-HANT 來電控制器
KO 통화 제어
ID Pengaturan panggilan





Adaptive Noise Cancellation

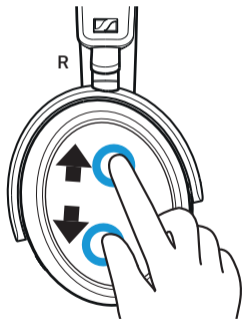
- DE Aktive Geräuschunterdrückung
FR Annulation active du bruit
ES Atenuación activa del ruido
PT Controlo/Controle ativo de ruído
NL Actieve ruisonderdrukking
IT Soppressione attiva dei rumori
DA Aktiv støjundertrykkelse
SV Aktiv brusreducering
FI Aktiivinen melunvaimennus
EL Ενεργή καταστολή θορύβου
PL Aktywne tłumienie hałasu
TR Etkin Gürültü Bastırma
RU Система активного шумоподавления
JA アクティブノイズキャンセリング
ZH-HANS 主动降噪
ZH-HANT 主動降噪
KO 능동 소음 억제
ID Peredaman kebisingan aktif





Transparency Mode

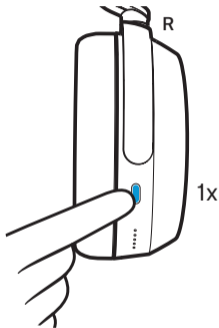
- DE Hören von Umgebungsgeräuschen
FR Écouter les bruits ambiants
ES Escuchar el ruido ambiental
PT Escutar ruídos externos
NL Horen van omgevingsgeluiden
IT Ascolto di rumori ambientali
DA Lyd fra omgivelserstøj
SV Lyssna på bakgrundsljud
FI Ympäristön äänien kuuluvuus
EL Ακρόαση θορύβων περιβάλλοντος
PL Słyszanie dźwięków z otoczenia
TR Çevre seslerini dinleyin
RU Пропускание шумов окружающей среды
JA 周辺ノイズを聞きます
ZH-HANS 环境噪音控制
ZH-HANT 控制環境噪音
KO 주변 소리 듣기
ID Mendengarkan suara di sekitar





Voice assistant

DE	Sprachassistent
FR	Assistant vocal
ES	Asistente personal
PT	Assistente de voz
NL	Spraakassistent
IT	Assistente vocale
DA	Taleassistent
SV	Röstassistent
FI	Puheavustaja
EL	Φωνητικός βοηθός
PL	Asystent głosowy
TR	Sesli asistan
RU	Голосовой помощник
JA	言語アシスト
ZH-HANS	语音助手
ZH-HANT	語音助手
KO	음성 어시스턴트
ID	Bantuan bahasa

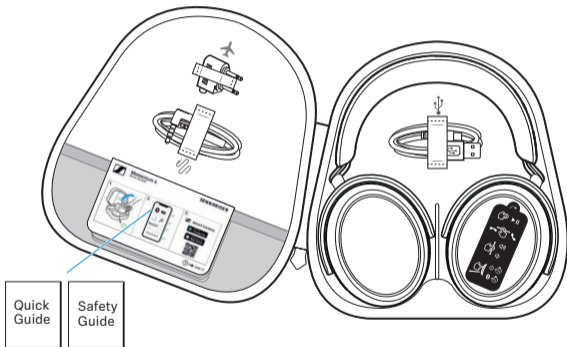


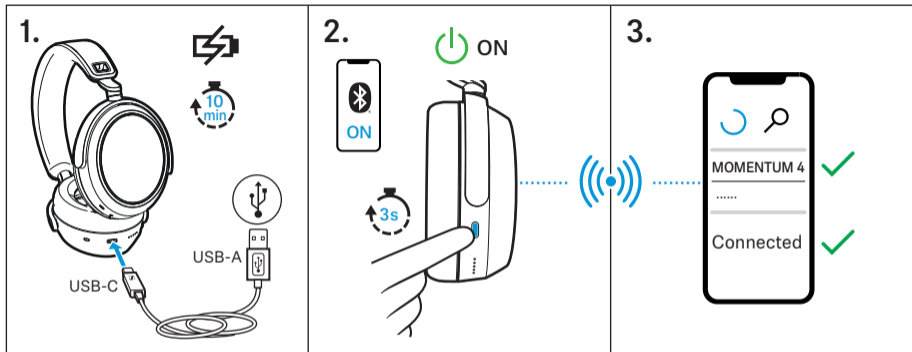
Siri, Google Assistant, ...



Package includes

DE	Lieferumfang
FR	Contenu
ES	Volumen de suministro
PT	Material fornecido
NL	Omvang levering
IT	In dotazione
DA	Leveringsomfang
SV	Leveransomfattning
FI	Toimitussisältö
EL	Περιεχόμενα συσκευασίας
PL	Zakres dostawy
TR	Teslimat kapsamı
RU	Комплект поставки
JA	同梱されているもの
ZH-HANS	包装内含
ZH-HANT	包裝包括
KO	구성품
ID	Isi kemasan





Sonova Consumer Hearing GmbH
Am Labor 1, 30900 Wedemark, Germany
www.sennheiser-hearing.com
03/22, 595515/A01



Manual and support

www.sennheiser-hearing.com/download